

# HOMESTEAD

## RANGE

Our  
specialist  
range of  
designs for  
acreage  
blocks



# About the Homestead Range

We have an exciting range of acreage designs that now even come with optional mud rooms for the working man coming home and keeping a clean house.

With our second kitchens provided through the whole range we now have homes from under 200m<sup>2</sup> right up to 470m<sup>2</sup>.

We understand the needs of an acreage design and the fact you like to customise these designs for your everyday needs and this is definitely available to you.



**HOMESTEAD**  
RANGE

## Contents

1	Homestead Range & Why Build with DJ
2-3	Hogan Builders Range? Facade Selection & Barga Design
4-5	Churchill & Emerald Designs
6-7	Koroit & Lynwood Designs
8-9	Maryborough & Mudjimba 1 Designs
10-11	Rosedale & Winton 1 Designs
12-13	Winton 2 & Yarram Designs



# HOMESTEAD RANGE

## Facade Selection



**Traditional Facade**



**Lindeman Facade**



**Heritage Facade**



**Rosebury Facade**



**Riverina Facade**



**Charlton Facade**

*All DJ Hogan Builders Range designs are priced to the traditional facade unless specified otherwise, all other facade options are upgrades. The facades pictured may vary in looks depending on house size and requirements. Pricing on the facades will vary depending on the selected facade. Developer guidelines will vary and some facades cannot be used in certain estates/areas. All DJ Hogan Builders Range designs are priced to the traditional facade unless specified otherwise, all other facade options are upgrades. All designs and facades throughout this document are the copyright of the DJ Hogan Builders Range.*

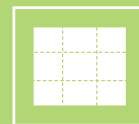




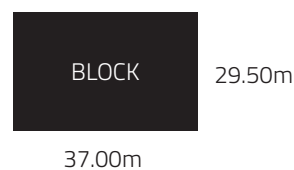
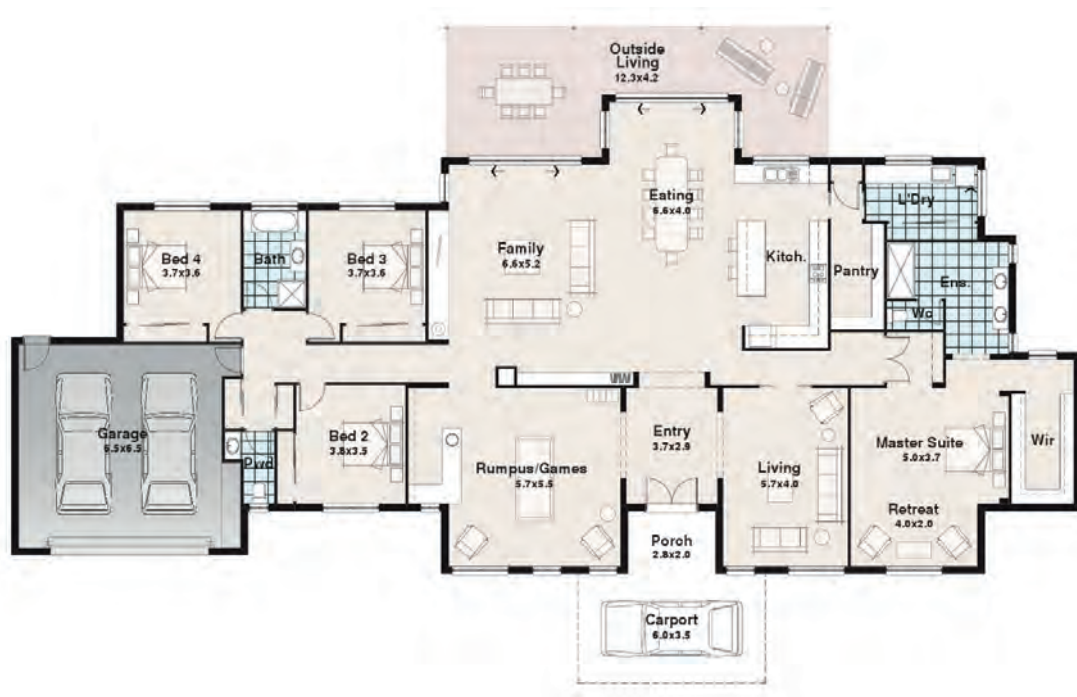




Charlton Facade Pictured



## HOMESTEAD RANGE



- 4
- 3
- 2.5
- 3

# The Churchill

**Width**      **Length**  
**34.25m**    **21.02m**

Residence	337.52	m <sup>2</sup>
Porch	5.60	m <sup>2</sup>
Outdoor Living	42.57	m <sup>2</sup>
Carport	21.00	m <sup>2</sup>
Garage	48.88	m <sup>2</sup>
<b>TOTAL</b>	<b>455.57</b>	<b>m<sup>2</sup></b>
	<b>49.04</b>	<b>sq</b>

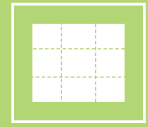
### The Churchill

The Churchill falls in between our Yarram and Rosedale design. Made for the acreage block the Churchill has it all from 4 bedrooms to 3 living areas. A retreat and big walk in robe in the master bedroom are key features of this design.

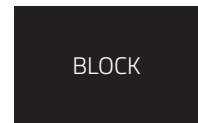
\*Based on standard Developer setback and Rescode setback of 4 - 5m front only and 3m rear setback. Plans, facades and specifications vary depending on zone and region.



Rosebury Facade Pictured



## HOMESTEAD RANGE



26.00m

27.00m

- 4/5
- 2
- 2
- 3

# The Emerald

**Width**  
**25.81m**

**Length**  
**17.79m**

Residence	320.65	m2
Porch	1.82	m2
Outdoor Living	84.05	m2
Garage	45.70	m2
<b>TOTAL</b>	<b>452.22</b>	<b>m2</b>
	<b>48.66</b>	<b>sq</b>

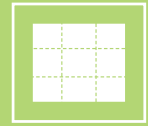
### The Emerald

The Emerald is a huge design that we take full advantage of the allocated space with the option of 5 bedrooms or 4 & a study, 2 bathrooms with 3 separate powder rooms, a mud room connected to a big laundry and a feature outside living area with potential for anything. What a design the Emerald is.



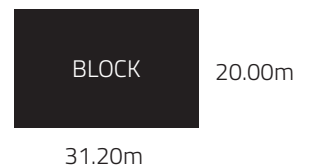
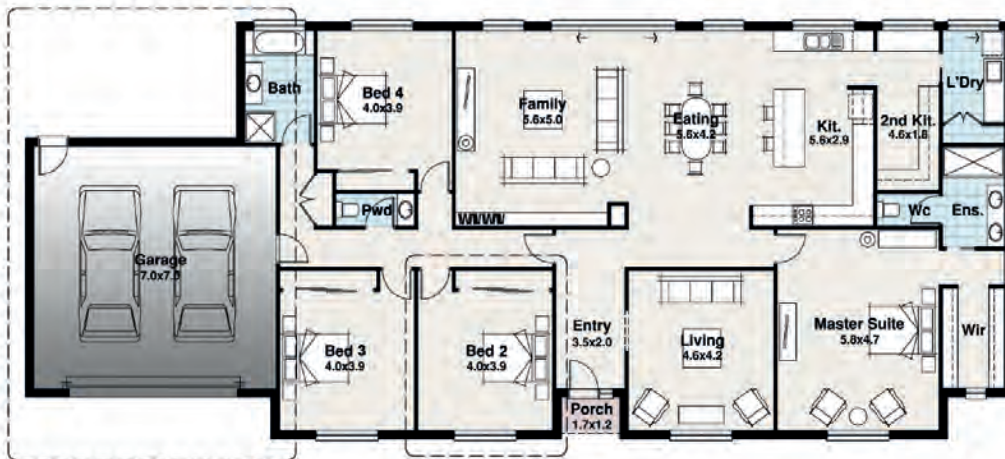


Lindeman Facade Pictured



# HOMESTEAD RANGE

## Option 1



3/4

2

2.5

2

## Option 3



## Option 2



# The Koroit

## Option 1 & 2

Residence	255.10	m2
Porch	2.04	m2
Garage	53.80	m2
TOTAL	310.94	m2
	33.47	sq

Width 28.50m  
Length 12.00m

## Option 3

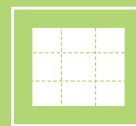
Residence	254.38	m2
Porch	2.04	m2
Garage	83.31	m2
TOTAL	339.73	m2
	36.57	sq

Width 28.50m  
Length 12.00m

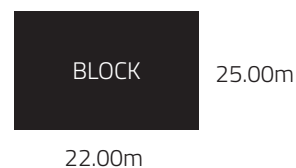
\*Based on standard Developer setback and Rescode setback of 4 - 5m front only and 3m rear setback. Plans, facades and specifications vary depending on zone and region.



Lindeman Facade Pictured



## HOMESTEAD RANGE



- 4
- 2
- 2
- 2

# The Lynwood

**Width**  
**19.94m**

**Length**  
**16.90m**

Residence	190.12	m2
Porch	3.29	m2
Outdoor Living	24.08	m2
Garage	36.30	m2
<b>TOTAL</b>	<b>253.79</b>	<b>m2</b>
	<b>27.31</b>	<b>sq</b>

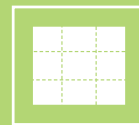
## The Lynwood

Another addition to the ever growing Homestead range the Lynwood is very welcome. With 4 bedrooms, multiple living areas and a nice open living style the Lynwood is sure a great design with beautiful features.

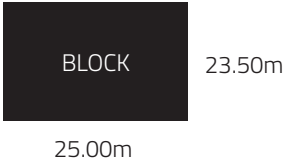




Heritage Facade Pictured



# HOMESTEAD RANGE



- 4
- 2.5
- 2

# The Maryborough

**Width**      **Length**  
**21.41m**    **15.20m**

Residence	248.46	m2
Porch	2.04	m2
Outdoor Living	29.26	m2
<b>TOTAL</b>	<b>279.76</b>	<b>m2</b>
	<b>30.10</b>	<b>sq</b>

## The Maryborough

The Maryborough is one of our smaller acreage designs that has it all. 4 bedrooms with the master suite that features a great sized walk in robe plus a very generous sized ensuite. Add a second kitchen, drying room, walk in linen cupboard and a powder room, you would be hard pressed to find a design with more features.

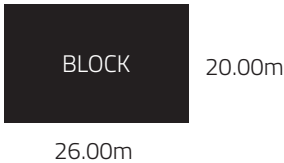
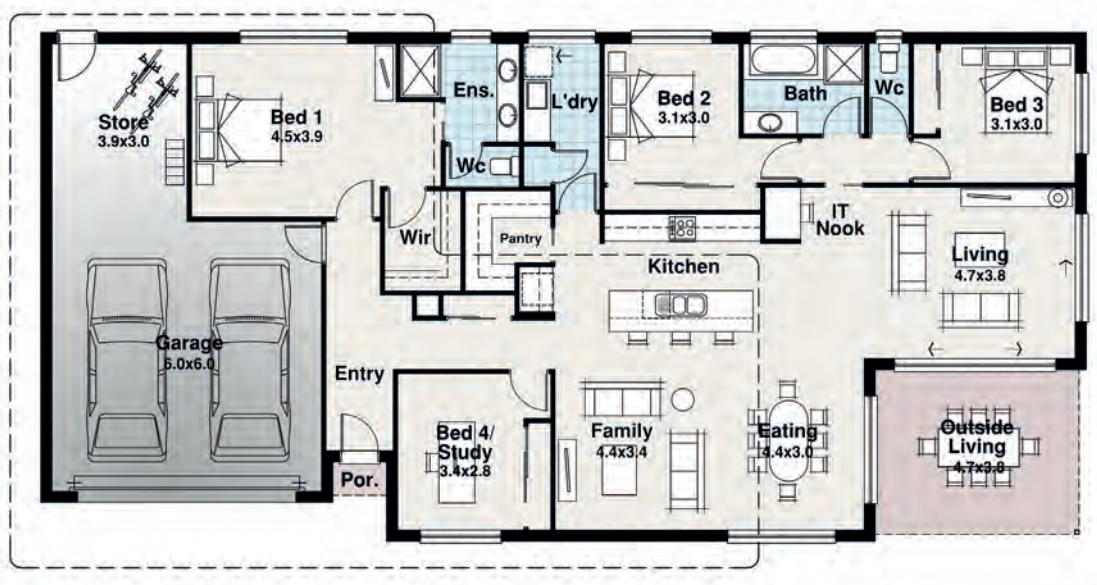
\*Based on standard Developer setback and Rescode setback of 4 - 5m front only and 3m rear setback. Plans, facades and specifications vary depending on zone and region.



Lindeman Facade Pictured



# HOMESTEAD RANGE



- 4
- 2
- 2
- 2

# The Mudjimba 1

**Width**      **Length**  
**23.22m**    **11.28m**

Residence	183.66	m2
Porch	1.08	m2
Outdoor Living	17.87	m2
Garage	52.71	m2
TOTAL	255.32	m2
	27.48	sq

**The Mudjimba 1**  
The Mudjimba was IBN's First Queensland display and received fantastic feedback. With 4 bedrooms, 2 living areas, IT nook and great sized kitchen the Mudjimba fills in quite nicely.

\*Based on standard Developer setback and Rescode setback of 4 - 5m front only and 3m rear setback. Plans, facades and specifications vary depending on zone and region.

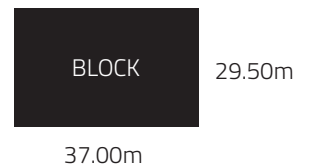




Charlton Facade Pictured



# HOMESTEAD RANGE



- 3
- 3
- 2.5
- 3

## The Rosedale

**Width**      **Length**  
**34.25m**    **21.02m**

Residence	311.18	m2
Porch	5.60	m2
Outdoor Living	39.13	m2
Carport	21.00	m2
Garage	49.83	m2
<b>TOTAL</b>	<b>426.74</b>	<b>m2</b>
	<b>45.93</b>	<b>sq</b>

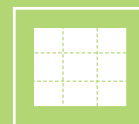
### The Rosedale

The Rosedale is a smaller version of the Churchill which features 3 bedrooms instead of 4. Being one of our acreage designs the Rosedale still has heaps of living space and is perfect for blocks with plenty of room.

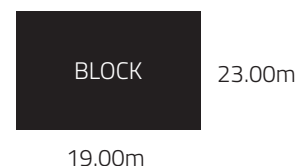
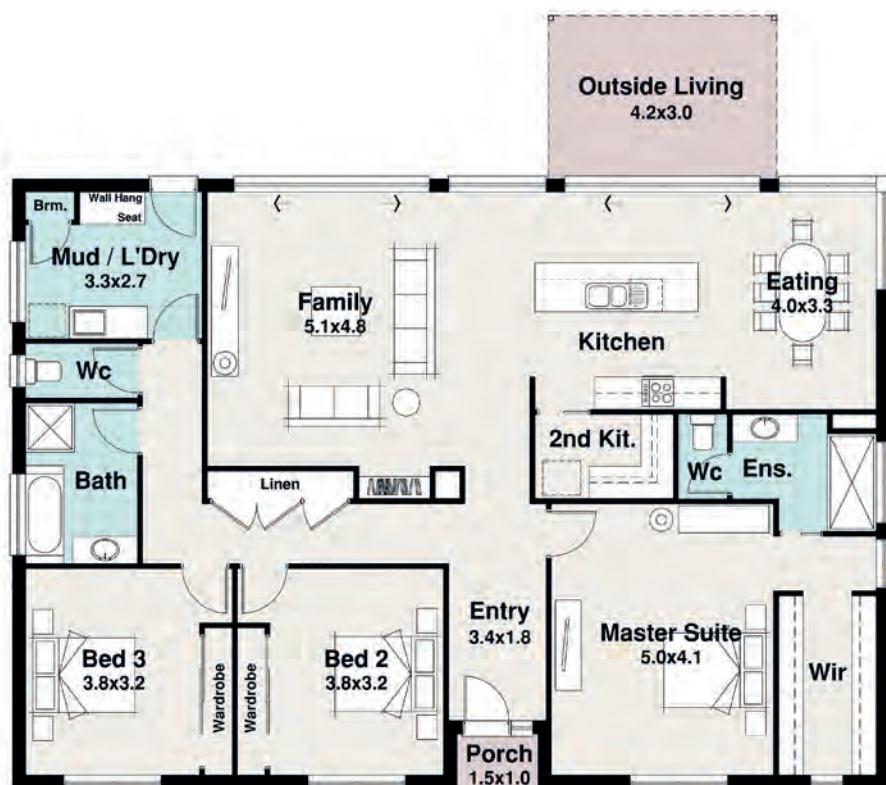
\*Based on standard Developer setback and Rescode setback of 4 - 5m front only and 3m rear setback. Plans, facades and specifications vary depending on zone and region.



Heritage Facade Pictured



## HOMESTEAD RANGE



# The Winton 1

**Width** 16.13m  
**Length** 14.20m

Residence	179.16	m2
Porch	1.50	m2
Outdoor Living	12.60	m2
<b>TOTAL</b>	<b>193.26</b>	<b>m2</b>
	<b>20.79</b>	<b>sq</b>

### The Winton 1

A smaller sized acreage design the Winton features 3 bedrooms, a second kitchen and a mud room with the laundry. This design is easy to modify if you need a garage or bigger outside living this can be altered with ease.

\*Based on standard Developer setback and Rescode setback of 4 - 5m front only and 3m rear setback. Plans, facades and specifications vary depending on zone and region.

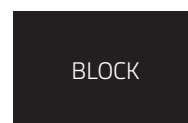




Heritage Facade Pictured



## HOMESTEAD RANGE



BLOCK

23.00m

22.80m

4

2

2

# The Winton 2

**Width**      **Length**  
**19.72m**    **14.20m**

Residence	219.36	m2
Porch	1.50	m2
Outdoor Living	12.60	m2
<b>TOTAL</b>	<b>233.46</b>	<b>m2</b>
	<b>25.12</b>	<b>sq</b>

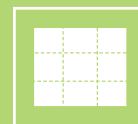
## The Winton 2

Added features from the Winton 1 are the Second living area at the front of the design, a drying room & walk in linen cupboard. The Winton 2 is wider which allows a more spacious feel but still comes in under 235m2.

\*Based on standard Developer setback and Rescode setback of 4 - 5m front only and 3m rear setback. Plans, facades and specifications vary depending on zone and region.



Riverena Facade Pictured



## HOMESTEAD RANGE



BLOCK 28.50m

37.00m

4

3

2.5

3

# The Yarram

**Width** 34.25m  
**Length** 21.02m

Residence	352.74	m2
Porch	5.60	m2
Outdoor Living	42.57	m2
Carport	21.00	m2
Garage	48.07	m2
<b>TOTAL</b>	<b>469.98</b>	<b>m2</b>
	<b>50.59</b>	<b>sq</b>

## The Yarram

The Yarram is our number one requested Homestead design and also the biggest D J Hogan Builders Range design. There is not much that the Yarram doesn't have due to its monstrous size, it even features a bar.

\*Based on standard Developer setback and Rescode setback of 4 - 5m front only and 3m rear setback. Plans, facades and specifications vary depending on zone and region.



**DJ Hogan Builders** are a family owned and operated award winning builders. We have more than 20 years proven experience in the building industry.

We build beautiful new homes and commercial dwellings in the Wimmera and Horsham region – on time and hassle free and to your budget.



**HOMESTEAD**  
RANGE

Our  
specialist  
range of  
designs for  
acreage  
blocks



39B Hamilton Road, Horsham, VIC

P: (03) 5382 7323

E: [dean@djhoganbuilders.com.au](mailto:dean@djhoganbuilders.com.au)

W: [djhoganbuilders.com.au](http://djhoganbuilders.com.au)

DJ Hogan Builders reserve the right to change prices, home designs and specifications without notice. Floorplans used in this brochure depict a modern facade unless otherwise stated. Photographs may depict fixtures, finishes and features not included in any pricing specified. These may include architectural facades, landscaping items, such as planter boxes, retaining walls, water features, pergolas, screens and decorative landscaping items such as fencing and outdoor kitchens and barbeques. For detailed home pricing and specification, please talk to a New Homes Consultant.